

PLACE FINGERNAIL UNDERNEATH THE LIP OF CAP AND PUSH UP SLOWLY TO KEEP THE BOTTLE STEADY AND AVOID SPILLS.



APPLY 2 COATS OF ANY CONE 06 GLAZE TO CONE 04 BISQUE.



FOR MID-RANGE PROJECTS, APPLY 2 COATS OF GLAZE AND BISQUE FIRE TO CONE 04.

CHOOSE FROM TWO CRYSTAL APPLICATION METHODS:



1. MIX IN COLOR BURST CRYSTAL CHIPS WITH THIRD COAT OF GLAZE AND PAINT ON WITH BRUSH.

- OR -

2. APPLY THIRD COAT OF GLAZE AND WHILE GLAZE IS STILL WET, SPRINKLE CRYSTAL CHIPS WHERE DESIRED.



*Tip: Apply crystals sparsely near bottom of piece to keep crystals from flowing onto kiln shelf.*

STILT AND FIRE TO CONE 06.

FOR MID-RANGE PROJECTS, DRY FOOT AND FIRE TO CONE 5-6.



**AVAILABLE IN 2-OZ. SIZE HANG-TAB TUBES AND IN A WIDE RANGE OF COLORS!**



For more information and project instructions, visit [www.ilovetocreate.com/color-burst-crystal-chips](http://www.ilovetocreate.com/color-burst-crystal-chips)

### COLOR BURST CRYSTAL CHIPS ASSORTMENT

Assortment includes:

- (8) Hang-tab tubes of each color - that's 64 total!
- 50-pack of Color Burst Crystal Chips brochures - PR1016
- Spinning rack display
- Promotional header card

Check with your favorite Duncan distributor for more details.



Kiln required



Safe for use on food containers when properly applied and fired to cone 06



**Duncan**  
**COLOR BURST**  
**CRYSTAL CHIPS™**

**DUNCAN® COLOR BURST CRYSTAL CHIPS™ WILL MAKE YOUR CERAMIC ART PROJECTS EXPLODE WITH COLOR!**



Created by Michele Zulim featuring Duncan® Satin Glazes®, Duncan® EHVision® Glazes, Duncan® Shimmer Glazes™, Duncan® Artisan Glazes™, Duncan® Courtyard Art Glazes™, Duncan® Concepts® Underglazes for Bisque, and Duncan® Designer Glazes®

**Duncan**

© 2015 iLoveToCreate®  
5673 E. Shields Avenue  
Fresno, CA 93727  
[www.ilovetocreate.com](http://www.ilovetocreate.com)  
PR 1016 RM# 0027726 5/15

Learn more about our new Duncan® Color Burst Crystal Chips™ from:

Due to the versatile nature of the crystals when combined with different glazes, it is recommended to test first using a tile at horizontal and vertical angles.

Available in a popular array of colors and various sized chips, Color Burst Crystal Chips can be mixed with any of your favorite glazes or placed where desired when the glaze is wet to create one-of-a-kind pieces that explode with vibrant bursts of color. Crystal chips will react differently in the firing process depending on what glaze you pair them with, changing the color, burst size or amount of flow.



LOW-FIRE

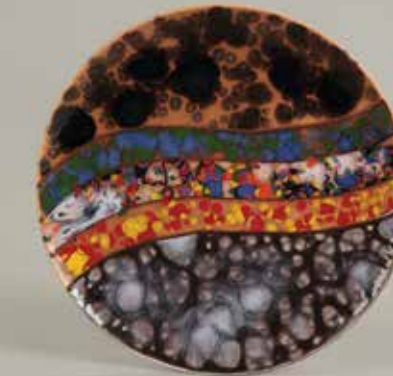
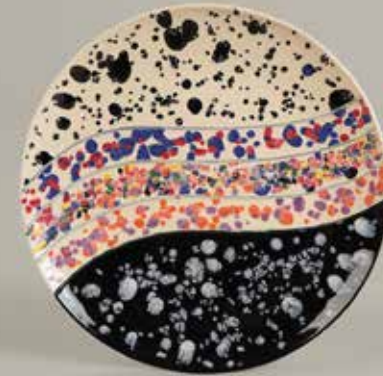
Duncan® Color Burst Crystal Chips™ pair up beautifully with a multitude of glazes for limitless color combinations! For added fun and appeal, the crystals behave differently depending on the slope of your surface!



**HORIZONTAL**

Flat surfaces allow the crystals to spread out evenly and uniformly.

*Shown on Duncan® Oh Four® Bisque Item No. 21426 – Coupe Dinner Plate*



**SLOPED**

Pieces with inclined designs help the crystals slide and produce dramatic and unpredictable results.

*Shown on Duncan® Oh Four® Bisque Item No. 32930 – Dotted Bowl*



**VERTICAL**

Vertical surfaces let gravity do the work. During firing, the crystals are pulled downward creating dazzling, drip-like effects.

*Shown on Duncan® Oh Four® Bisque Item No. 29057 – Organic Vase 3*



MID-RANGE



Color Burst Crystal Chips™ can be fired to Cone 6!

